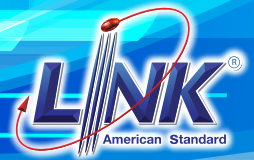


Category 6A Patch Cords



LINK Category 6A Patch Cords are ANSI/TIA-568-C.2 requirement for Category 6A performance. LINK Category 6A Patch Cords are assembled by manufacturer with totally test to reach the standard by Q.C team. LINK Category 6A Patch Cord assembly of high grade of CAT 6A Cable and CAT 6A Pulg with Cover Boot.

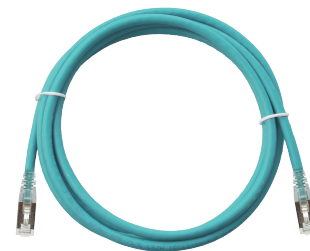
SPECIFICATION



Standard	: ANSI/TIA-568-C.2 Category 6A, ISO/IEC 11801:2017 Class EA, EN50173-1 and IEEE 802.3an (10GBase T)
Application	: 10G (XG), IEEE802.3, 10GBase-T, 1000Base-T, 10/100Base-TX, 4/16 Token ring, 155/622 and 1.2G ATM, POE, ISDN, VoIP and other
Cable	: Stranded wire flexible S/FTP category 6A performance
Color	: White (Available color on request)
Connector	: Category 6 RJ45 modular plug with over 50 micro-inches gold plating
Wire Size	: 26 AWG
Cover Boot	: Molding from manufacturer are designed to protect plugs and cables
Q.C.	: 100% factory assembly and testing
Approvals	: UL Listed E197771
Certified	: Lead-free & RoHS Compliant



Ex. US-5201S : Shield CAT6A RJ45 to RJ45 Patch Cord, CM, 1 meter



Ex. US-5201SLSZH : Shield CAT6A RJ45 to RJ45 Patch Cord, LSZH, 1 meter

Part No.	Description	Length (m.)	Color
US-5201S	CAT6A RJ45 to RJ45 PATCH CORD, CM	1	White
US-5202S	CAT6A RJ45 to RJ45 PATCH CORD, CM	2	White
US-5203S	CAT6A RJ45 to RJ45 PATCH CORD, CM	3	White
US-5205S	CAT6A RJ45 to RJ45 PATCH CORD, CM	5	White
US-5210S	CAT6A RJ45 to RJ45 PATCH CORD, CM	10	White
US-5215S	CAT6A RJ45 to RJ45 PATCH CORD, CM	15	White
US-5220S	CAT6A RJ45 to RJ45 PATCH CORD, CM	20	White

*For LSZH Jacket Available on request.

Category 6A In-Line Couplers

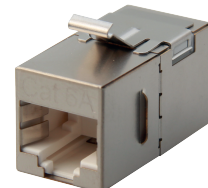
LINK In-Line Couplers provide a 180 Jack to Jack Splice. Couplers are available in eight position RJ45 Styles allow a simple operation with horizontal cables, which can easily be extended. Broken cables can be coupled without laying new complete cable segment. LINK In-Line Couplers are universal standards for all RJ45 Modular Plugs.

SPECIFICATION

Standard	: ANSI/TIA-568-C.2 Category 6A, ISO IEC-11801:2017 Class EA, EN50173-1 and IEEE 802.3an (10GBase T)
Product Type	: RJ45 Jack to RJ45 Jack
Color	: White / Metallic with LINK logo
Certified	: Lead - free & RoHS Compliant



A



B

Part No.	Description	Type	Figure	Dimension (mm.)	Color
US-4007IL	CAT 6A IN-LINE COUPLERS	Unshield	A	L 35 x W 16.3 x H 21	White
US-4007SIL	SHIELD CAT 6A IN-LINE COUPLERS	Shield	B	L 36 x W 17.8 x H 22	Metallic