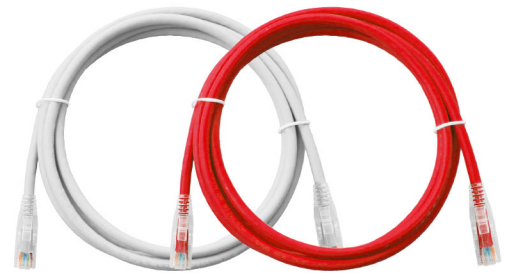


LINK Category 6 Ultra Patch Cord exceeds the proposed ANSI/TIA-568.2-D requirement for Category 6 performance. LINK Category 6 Patch Cords are assembled by manufacturer with totally test to reach the standard by Q.C team. LINK Category 6 Patch Cord assembly of special high grade of CAT 6 Cable and high performance Plug & Boot.

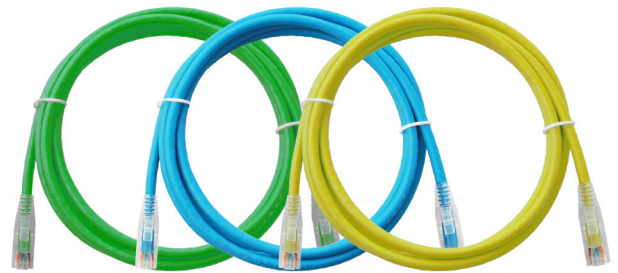
## SPECIFICATION

Standard : ANSI/TIA-568.2-D Category 6, ISO/IEC11801:2017 Class E and EN50173-1  
 Application : 10/100/1000 BASE-T, 2.5G/5G, 10G BASE-T, IEEE 802.3i/u/ab/bz/an, PoE/PoE+, 4/16 Token Ring, 52/155/622Mbps and 1.2Gbps ATM, ISDN, VoIP and other  
 Cable : Stranded wire flexible UTP category 6 performance  
 Flame rating : CM or LSZH  
 Color : White, Red, Green, Blue, Yellow  
 Connector : Category 6 RJ45 modular plug with over 50 micro-inches gold plating  
 Wire Size : 24AWG  
 Cover Boot : Transparent boot from manufacturer are designed to protect plugs and cables  
 Q.C : 100% factory assembly and testing  
 Approvals : UL Listed E197771 and Intertek Channels Test  
 Certified : Lead-free & RoHS Compliant



Part No.	Description	Length (m.)
US-5101LZ-X	CAT6 RJ45 to RJ45 PATCH CORD, LSZH	1
US-5102LZ-X	CAT6 RJ45 to RJ45 PATCH CORD, LSZH	2
US-5103LZ-X	CAT6 RJ45 to RJ45 PATCH CORD, LSZH	3
US-5105LZ-X	CAT6 RJ45 to RJ45 PATCH CORD, LSZH	5
US-5110LZ-X	CAT6 RJ45 to RJ45 PATCH CORD, LSZH	10
US-5115LZ-X	CAT6 RJ45 to RJ45 PATCH CORD, LSZH	15
US-5120LZ-X	CAT6 RJ45 to RJ45 PATCH CORD, LSZH	20

X Color = 1 (White), 2 (Red), 3 (Green), 4 (Blue), 5 (Yellow)



CAT6 RJ45 to RJ45 Patch Cord,LSZH

## SPECIFICATION

Standard : ANSI/TIA-568.2-D Category 6, ISO/IEC11801:2017 Class E and EN50173-1  
 Application : 10/100/1000 BASE-T, 2.5G/5G, 10G BASE-T, IEEE 802.3i/u/ab/bz/an, PoE/PoE+, 4/16 Token Ring, 52/155/622Mbps and 1.2Gbps ATM, ISDN, VoIP and other  
 Cable : Stranded wire flexible S/FTP category 6 performance  
 Color : White  
 Connector : Category 6 RJ45 modular plug with over 50 micro-inches gold plating  
 Wire Size : 26AWG  
 Cover Boot : Transparent boot from manufacturer are designed to protect Plugs and Cables  
 Q.C : 100% factory assembly and testing  
 Certified : Lead-free & RoHS Compliant

Part No.	Description	Length (m.)
US-5101SLZ-X	Shield CAT 6 RJ45 to RJ45 PATCH CORD, LSZH	1
US-5102SLZ-X	Shield CAT 6 RJ45 to RJ45 PATCH CORD, LSZH	2
US-5103SLZ-X	Shield CAT 6 RJ45 to RJ45 PATCH CORD, LSZH	3

X Color = 1 (White)



Shielded CAT6 RJ45 to RJ45 Patch Cord,LSZH

## SPECIFICATION

PERFORMANCE : ANSI/TIA-568.2-D Category 6 Channel, ISO/IEC11801:2017 Class E Channel  
 Application : IEEE802.3, 1000Base-T, 10/100Base-TX  
 Cable : Stranded wire flexible UTP category 6 performance  
 Color : Light Blue  
 Connector : Category 6 RJ45 modular plug with over 50 micro-inches gold plating  
 Wire Size : 30AWG  
 Cover Boot : Molding from manufacturer are designed to protect Plugs and Cables  
 Q.C : 100% factory assembly and testing  
 Certified : Lead-free & RoHS Compliant

Part No.	Description	Length (m.)
US-5141-X	FLAT CAT 6 RJ45 to RJ45 PATCH CORD	1
US-5142-X	FLAT CAT 6 RJ45 to RJ45 PATCH CORD	2
US-5143-X	FLAT CAT 6 RJ45 to RJ45 PATCH CORD	3
US-5145-X	FLAT CAT 6 RJ45 to RJ45 PATCH CORD	5
US-5150-X	FLAT CAT 6 RJ45 to RJ45 PATCH CORD	10
US-5155-X	FLAT CAT 6 RJ45 to RJ45 PATCH CORD	15

X Color = 8 (Light Blue)



FLAT CAT6 RJ45 to RJ45 Patch Cord