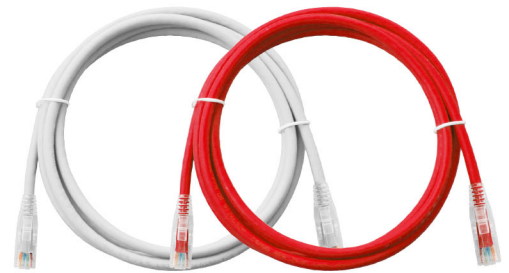


LINK Category 6 Ultra Patch Cord exceeds the proposed ANSI/TIA-568.2-D requirement for Category 6 performance. LINK Category 6 Patch Cords are assembled by manufacturer with totally test to reach the standard by Q.C team. LINK Category 6 Patch Cord assembly of special high grade of CAT 6 Cable and high performance Plug & Boot.

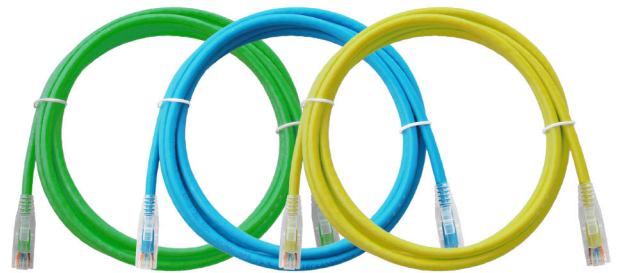
SPECIFICATION

Standard : ANSI/TIA-568.2-D Category 6, ISO/IEC11801:2017 Class E and EN50173-1
 Application : 10/100/1000 BASE-T, 2.5G/5G, 10G BASE-T, IEEE 802.3i/u/ab/bz/an, PoE/PoE+, 4/16 Token Ring, 52/155/622Mbps and 1.2Gbps ATM, ISDN, VoIP and other
 Cable : Stranded wire flexible UTP category 6 performance
 Flame rating : CM or LSZH
 Color : White, Red, Green, Blue, Yellow
 Connector : Category 6 RJ45 modular plug with over 50 micro-inches gold plating
 Wire Size : 24AWG
 Cover Boot : Transparent boot from manufacturer are designed to protect plugs and cables
 Q.C : 100% factory assembly and testing
 Approvals : UL Listed E197771 and Intertek Channels Test
 Certified : Lead-free & RoHS Compliant



| Part No. | Description | Length (m.) |
|-------------|------------------------------------|-------------|
| US-5101LZ-X | CAT6 RJ45 to RJ45 PATCH CORD, LSZH | 1 |
| US-5102LZ-X | CAT6 RJ45 to RJ45 PATCH CORD, LSZH | 2 |
| US-5103LZ-X | CAT6 RJ45 to RJ45 PATCH CORD, LSZH | 3 |
| US-5105LZ-X | CAT6 RJ45 to RJ45 PATCH CORD, LSZH | 5 |
| US-5110LZ-X | CAT6 RJ45 to RJ45 PATCH CORD, LSZH | 10 |
| US-5115LZ-X | CAT6 RJ45 to RJ45 PATCH CORD, LSZH | 15 |
| US-5120LZ-X | CAT6 RJ45 to RJ45 PATCH CORD, LSZH | 20 |

X Color = 1 (White), 2 (Red), 3 (Green), 4 (Blue), 5 (Yellow)



CAT6 RJ45 to RJ45 Patch Cord,LSZH

SPECIFICATION

Standard : ANSI/TIA-568.2-D Category 6, ISO/IEC11801:2017 Class E and EN50173-1
 Application : 10/100/1000 BASE-T, 2.5G/5G, 10G BASE-T, IEEE 802.3i/u/ab/bz/an, PoE/PoE+, 4/16 Token Ring, 52/155/622Mbps and 1.2Gbps ATM, ISDN, VoIP and other
 Cable : Stranded wire flexible S/FTP category 6 performance
 Color : White
 Connector : Category 6 RJ45 modular plug with over 50 micro-inches gold plating
 Wire Size : 26AWG
 Cover Boot : Transparent boot from manufacturer are designed to protect Plugs and Cables
 Q.C : 100% factory assembly and testing
 Certified : Lead-free & RoHS Compliant

| Part No. | Description | Length (m.) |
|--------------|--------------------------------------------|-------------|
| US-5101SLZ-X | Shield CAT 6 RJ45 to RJ45 PATCH CORD, LSZH | 1 |
| US-5102SLZ-X | Shield CAT 6 RJ45 to RJ45 PATCH CORD, LSZH | 2 |
| US-5103SLZ-X | Shield CAT 6 RJ45 to RJ45 PATCH CORD, LSZH | 3 |

X Color = 1 (White)



Shielded CAT6 RJ45 to RJ45 Patch Cord,LSZH

SPECIFICATION

PERFORMANCE : ANSI/TIA-568.2-D Category 6 Channel, ISO/IEC11801:2017 Class E Channel
 Application : IEEE802.3, 1000Base-T, 10/100Base-TX
 Cable : Stranded wire flexible UTP category 6 performance
 Color : Light Blue
 Connector : Category 6 RJ45 modular plug with over 50 micro-inches gold plating
 Wire Size : 30AWG
 Cover Boot : Molding from manufacturer are designed to protect Plugs and Cables
 Q.C : 100% factory assembly and testing
 Certified : Lead-free & RoHS Compliant

| Part No. | Description | Length (m.) |
|-----------|------------------------------------|-------------|
| US-5141-X | FLAT CAT 6 RJ45 to RJ45 PATCH CORD | 1 |
| US-5142-X | FLAT CAT 6 RJ45 to RJ45 PATCH CORD | 2 |
| US-5143-X | FLAT CAT 6 RJ45 to RJ45 PATCH CORD | 3 |
| US-5145-X | FLAT CAT 6 RJ45 to RJ45 PATCH CORD | 5 |
| US-5150-X | FLAT CAT 6 RJ45 to RJ45 PATCH CORD | 10 |
| US-5155-X | FLAT CAT 6 RJ45 to RJ45 PATCH CORD | 15 |

X Color = 8 (Light Blue)



FLAT CAT6 RJ45 to RJ45 Patch Cord