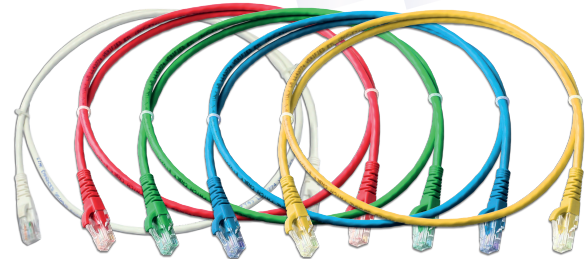


LINK Category 6 Ultra Patch Cord exceeds the proposed ANSI/TIA-568-C.2 requirement for Category 6 performance. LINK Category 6 Patch Cords are assembled by manufacturer with totally test to reach the standard by Q.C team. LINK Category 6 Patch Cord assembly of special high grade of CAT 6 Cable and high performance Plug & Boot.

SPECIFICATION

Standard	: ANSI/TIA-568-C.2 Category 6, ISO/IEC11801:2017 Class E and EN50173-1
Application	: IEEE802.3, 1000Base-T, 10/100Base-TX, 4/16 Token ring, 155/622 and 1.2G ATM, POE, ISDN, VoIP and other
Cable	: Stranded wire flexible UTP category 6 performance
Rlammrating	: CM or LSZH
Color	: White, Red, Green, Blue, Yellow
Connector	: Category 6 RJ45 modular plug with over 50 micro-inches gold plating
Wire Size	: 24AWG
Cover Boot	: Molding from manufacturer are designed to protect plugs and cables
Q.C	: 100% factory assembly and testing
Approvals	: UL Listed E197771 and Intertek Channels Test
Certified	: Lead-free & RoHS Compliant

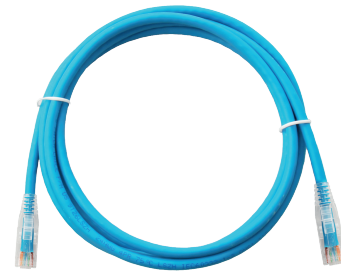


Ex. US-5101-X : CAT6 RJ45 to RJ45 Patch Cord, CM, 1 meter

Part No.	Description	Length (m.)
US-5101-X	CAT6 RJ45 to RJ45 PATCH CORD, CM	1
US-5102-X	CAT6 RJ45 to RJ45 PATCH CORD, CM	2
US-5103-X	CAT6 RJ45 to RJ45 PATCH CORD, CM	3
US-5105-X	CAT6 RJ45 to RJ45 PATCH CORD, CM	5
US-5110-X	CAT6 RJ45 to RJ45 PATCH CORD, CM	10
US-5115-X	CAT6 RJ45 to RJ45 PATCH CORD, CM	15
US-5120-X	CAT6 RJ45 to RJ45 PATCH CORD, CM	20

X Color = 1 (White), 2 (Red), 3 (Green), 4 (Blue), 5 (Yellow)

*For LSZH Jacket Available on request.



Ex. US-5101-XLSZH : CAT6 RJ45 to RJ45 Patch Cord, LSZH, 1 meter

SPECIFICATION

Standard	: ANSI/TIA-568-C.2 Category 6, ISO/IEC11801:2017 Class E and EN50173-1
Application	: IEEE802.3, 1000Base-T, 10/100Base-TX, 4/16 Token ring, 155/622 and 1.2G ATM, POE, ISDN, VoIP and other
Cable	: Stranded wire flexible S/FTP category 6 performance
Color	: White
Connector	: Category 6 RJ45 modular plug with over 50 micro-inches gold plating
Wire Size	: 26AWG
Cover Boot	: Molding from manufacturer are designed to protect Plugs and Cables
Q.C	: 100% factory assembly and testing
Approvals	: UL Listed E197771 and Intertek Channels Test
Certified	: Lead-free & RoHS Compliant

Part No.	Description	Length (m.)
US-5101S-X	Shield CAT 6 RJ45 to RJ45 PATCH CORD, CM	1
US-5102S-X	Shield CAT 6 RJ45 to RJ45 PATCH CORD, CM	2
US-5103S-X	Shield CAT 6 RJ45 to RJ45 PATCH CORD, CM	3

X Color = 1 (White)



Shield CAT6 RJ45 to RJ45 Patch Cord

SPECIFICATION

PERFORMANCE	: ANSI/TIA-568-C.2 Category 6 Channel, ISO/IEC11801:2017 Class E Channel
Application	: IEEE802.3, 1000Base-T, 10/100Base-TX
Cable	: Stranded wire flexible UTP category 6 performance
Color	: Light Blue
Connector	: Category 6 RJ45 modular plug with over 50 micro-inches gold plating
Wire Size	: 30AWG
Cover Boot	: Molding from manufacturer are designed to protect Plugs and Cables
Q.C	: 100% factory assembly and testing
Certified	: Lead-free & RoHS Compliant

Part No.	Description	Length (m.)
US-5141-X	FLAT CAT 6 RJ45 to RJ45 PATCH CORD	1
US-5142-X	FLAT CAT 6 RJ45 to RJ45 PATCH CORD	2
US-5143-X	FLAT CAT 6 RJ45 to RJ45 PATCH CORD	3
US-5145-X	FLAT CAT 6 RJ45 to RJ45 PATCH CORD	5
US-5150-X	FLAT CAT 6 RJ45 to RJ45 PATCH CORD	10
US-5155-X	FLAT CAT 6 RJ45 to RJ45 PATCH CORD	15

X Color = 8 (Light Blue)



FLAT CAT6 RJ45 to RJ45 Patch Cord