

These cables feature all the benefits of professional assembly with manufacture moulding to help them survive the rigors of a desktop environment, LINK offers fully Booted Category 5e (CAT 5E) Patch Cords that will give you years of dependable use these patch cords are nearly impossible to damage! It's a smart and sound investment. All of the colored patch cords are T568B pinning with 100% tested.

## SPECIFICATION

Standard : ANSI/TIA-568.2-D Category 5e, ISO/IEC 11801:2017 Class D and EN50173-1  
 Application : 10/100/100 BASE-T, 2.5G BASE-T, IEEE 802.3i/u/ab/bz, PoE/PoE+, 4/16 Token Ring, 52/155/622Mbps and 1.2Gbps ATM, ISDN, VoIP and other  
 Cable : Stranded wire flexible UTP Category 5e Cable  
 Flame rating : CM or LSZH  
 Color : White, Red, Green, Blue, Yellow  
 Connector : Category 5e RJ45 modular Plugs with 50 micro-inches Gold Plating over Nickel Plated and Phosphor Bronze  
 Wire Size : 24AWG  
 Slim Boot : Transparent boot from manufacturer are designed to protect Plugs and Cables  
 Q.C : 100% factory assembly and testing  
 Approvals : UL Listed E197771 and Intertek Channels Test  
 Certified : Lead-free & RoHS Compliant

| Part No.    | Description                          | Length (m.) |
|-------------|--------------------------------------|-------------|
| US-5003LZ-X | CAT 5E RJ45 to RJ45 PATCH CORD, LSZH | 1           |
| US-5006LZ-X | CAT 5E RJ45 to RJ45 PATCH CORD, LSZH | 2           |
| US-5010LZ-X | CAT 5E RJ45 to RJ45 PATCH CORD, LSZH | 3           |
| US-5015LZ-X | CAT 5E RJ45 to RJ45 PATCH CORD, LSZH | 5           |
| US-5020LZ-X | CAT 5E RJ45 to RJ45 PATCH CORD, LSZH | 10          |
| US-5025LZ-X | CAT 5E RJ45 to RJ45 PATCH CORD, LSZH | 15          |
| US-5030LZ-X | CAT 5E RJ45 to RJ45 PATCH CORD, LSZH | 20          |

X Color = 1 (White), 2 (Red), 3 (Green), 4 (Blue), 5 (Yellow)

## SPECIFICATION

Standard : ANSI/TIA-568.2-D Category 5e, ISO/IEC 11801:2017 Class D and EN50173-1  
 Application : 10/100/100 BASE-T, 2.5G BASE-T, IEEE 802.3i/u/ab/bz, PoE/PoE+, 4/16 Token Ring, 52/155/622Mbps and 1.2Gbps ATM, ISDN, VoIP and other  
 Cable : Stranded wire flexible F/UTP Category 5e Cable  
 Color : Black  
 Connector : Category 5e RJ45 modular Plugs with 50 micro-inches Gold Plating over Nickel Plated and Phosphor Bronze  
 Wire Size : 26AWG  
 Slim Boot : Transparent boot from manufacturer are designed to protect Plugs and Cables  
 Q.C : 100% factory assembly and testing  
 Certified : Lead-free & RoHS Compliant

| Part No.     | Description                                 | Length (m.) |
|--------------|---|-------------|
| US-5003SLZ-X | Shield CAT 5E RJ45 to RJ45 PATCH CORD, LSZH | 1           |
| US-5006SLZ-X | Shield CAT 5E RJ45 to RJ45 PATCH CORD, LSZH | 2           |
| US-5010SLZ-X | Shield CAT 5E RJ45 to RJ45 PATCH CORD, LSZH | 3           |

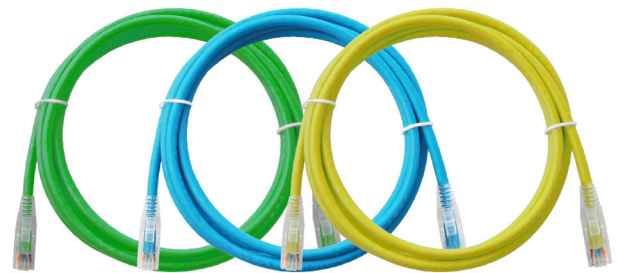
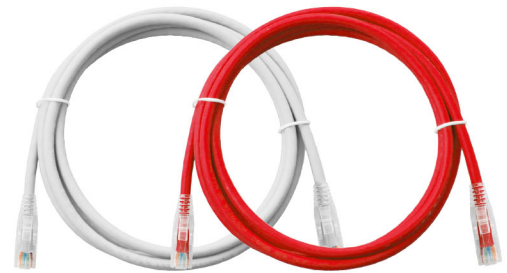
X Color = 6 (Black)

## SPECIFICATION

PERFORMANCE : ANSI/TIA-568.2-D Category 5e Channel , ISO/IEC 11801:2017 Class D Channel  
 Application : IEEE802.3, 1000Base-T, 10/100Base-TX  
 Cable : Stranded wire flexible UTP Category 5e Cable  
 Color : Pink  
 Connector : Category 5e RJ45 modular Plugs with 50 micro-inches Gold Plating over Nickel Plated and Phosphor Bronze  
 Wire Size : 30AWG  
 Slim Boot : Molding from manufacturer are designed to protect Plugs and Cables  
 Q.C : 100% factory assembly and testing  
 Certified : Lead-free & RoHS Compliant

| Part No.  | Description                         | Length (m.) |
|-----------|-------------------------------------|-------------|
| US-5041-X | FLAT CAT 5E RJ45 to RJ45 PATCH CORD | 1           |
| US-5042-X | FLAT CAT 5E RJ45 to RJ45 PATCH CORD | 2           |
| US-5043-X | FLAT CAT 5E RJ45 to RJ45 PATCH CORD | 3           |
| US-5045-X | FLAT CAT 5E RJ45 to RJ45 PATCH CORD | 5           |
| US-5050-X | FLAT CAT 5E RJ45 to RJ45 PATCH CORD | 10          |
| US-5055-X | FLAT CAT 5E RJ45 to RJ45 PATCH CORD | 15          |

X Color = 7 (Pink)



CAT5E RJ45 to RJ45 Patch Cord, LSZH



Shielded CAT5E RJ45 to RJ45 Patch Cord,LSZH



FLAT CAT5E RJ45 to RJ45 Patch Cord