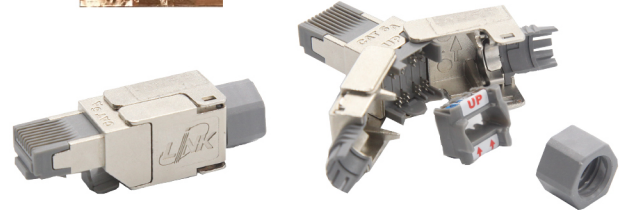


LINK Shield Category 6A RJ45 Modular Plug compliant ISO/IEC 11801 and ANSI/TIA-568.2-D requirements for category 6A performance. LINK offer plugs in standard configurations to terminate modular cord for patching or working applications. Simplified termination due to a unique process

SPECIFICATION



Standard	: ANSI/TIA-568.2-D Category 6A, ISO/IEC11801:2017 Class EA
Application	: 10/100/1000 BASE-T, 2.5G/5G, 10G BASE-T, IEEE 802.3i/u/ab/bz/an, PoE/PoE+, 4/16 Token Ring, 52/155/622Mbps and 1.2Gbps ATM, ISDN, VoIP and other
Housing	: Zinc-alloy fully shielded
IDC Contact	: Phosphor bronze with 150 micro inch tin plated
Plug Pin Contacts	: Phosphor Bronze alloy plated with 50 micro-inch of gold
Wiring cap	: Polycarbonate, UL 94V-0
Cover Nut	: Polycarbonate, UL 94V-0
Accept Wire	: 23AWG - 26AWG Solid & Stranded Wire
Certified	: RoHS Compliant



Part No.	Description	No. of Position	Packing	Color
US-10715	Shield Category 6A, RJ45 Modular Plug	8	1 Each/Pkg	Metallic / Gray

Category 6A RJ45 Modular Jacks

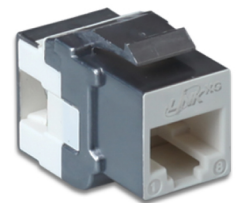
LINK Category 6A RJ45 Modular Jacks are design to provide maximum flexibility and high performance for all 10G application. Modular Jack is a new design punch down terminate by suitable with 110 or Krone connecting tools and toolless also available. Cover cap also to protect the connector from dust. The terminal supplied with T568A and T568B wiring configuration on the edge is easy to read and prevent termination errors.

SPECIFICATION

Standard	: ANSI/TIA-568.2-D Category 6A, ISO IEC11801:2017 Class EA, EN50173-1
Application	: 10/100/1000 BASE-T, 2.5G/5G, 10G BASE-T, IEEE 802.3i/u/ab/bz/an, PoE/PoE+, 4/16 Token Ring, 52/155/622Mbps and 1.2Gbps ATM, ISDN, VoIP and other
Product Type	: RJ45 Jack with cover caps
Wiring Pattern	: T568B/T568A Universal Color Pattern
Housing Material	: High Impact Flame Retardant Plastic (Unshield), Zinc Alloy with nickel plate (shield)
Housing Flammability Rating	: UL94V-0 ABS
Jack Contact	: Phosphor Bronze with over 50 micro-inches gold plating
Termination Block	: 90° & 180° 110 IDC, UL94V-0 Polycarbonate
IDC Contact	: Phosphor Bronze with tin over 150 micro-inches nickel under plated
Durability	: 1000 mating cycles (Jack Contact) 200 re-termination cycles (IDC contact)
Tool Free (Tooless Type)	: 180° IDC, UL94V-0 ABS
Shield Cover (Shield Type)	: Zinc Alloys, with nickel plate
Accept Wire Size	: 26AWG - 22AWG Solid & Stranded Wire
Approvals	: UL Listed E196947 and Intertek Channel Test
Certified	: Lead-free & RoHS Compliant



A



B



C

Part No.	Description	Type	Figure	Color
US-1034TFAS	Shield CAT 6A RJ45 Modular Jack, Tool Free, Auto Shutter	Shield	A	Metallic
US-1022SL	CAT 6A RJ45 MODULAR JACK, Slim Type	Unshield	B	Metallic
US-1022TFAS	CAT 6A RJ45 Modular Jack, Superslim Tool Free, Auto Shutter	Unshield	C	Gray/Metallic