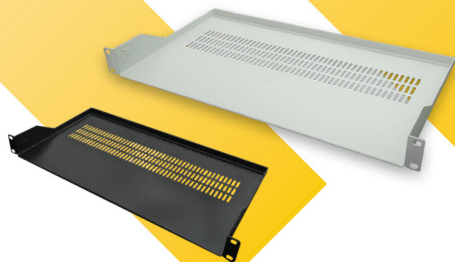


COMPONENT SHELVES



19"GERMANY
EXPORT RACK



A

FEATURES

- ◆ **Designed and Manufactured** To comply Standards of EIA-310-E (Rev.EIA-310D), IEC60297-1, IEC60297-2, BS5954 Part:2, DIN 41494
- ◆ **19" Germany Export Rack Shelves** Designed with 19" Germany Export Rack trademark embossing and perforated surrounding for ventilation, suitable for all 19" Rack system.
- ◆ **Manufactured** Made from 1.5mm Electro-Galvanized Steel Sheet.
- ◆ **Maximum Load Capability**
 - 1U Front screw shelf for open rack and wall rack : 50kg (Picture A)
 - Fixed shelf : 100kg (Picture B)
 - Sliding shelf : 75kg (Picture C)
- ◆ **Color** New shine light gray painted by Electrostatic powder coating process.
- ◆ **Manufacturer and Distributor** Certified by ISO 9001 : 2015.

Options

Color : *Black color (as requested)



B

ORDERING INFORMATION

Description	Deep					Figure
	250 mm.	480 mm.	650 mm.	750 mm.	950 mm.	
Front Panel Fix Shelf	G7-01025	-	-	-	-	A
Fix Component Shelf	-	G7-02045	G7-02065	G7-02075	G7-02095	B
Slide Component Shelf	-	G7-03045	G7-03065	G7-03075	G7-03095	C

* Order No. for Black Color : G7-0XXXXB

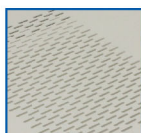
Sample : G7-02065B Fix Component Shelf Deep 65 cm., Black Color



Load Test



Load Test



Ventilation



19" GERMANY Sliding Rail