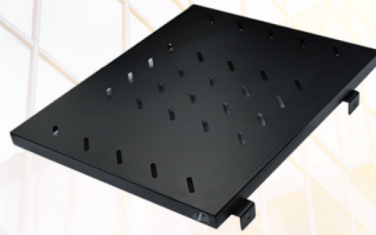


Component Shelves



Front Shelf



Fix Shelf



Slide Shelf

Standards

- ANSI/EIA-310D-1992, IEC60297-1, IEC60297-2, BS5954 Part : 2, DIN 41494

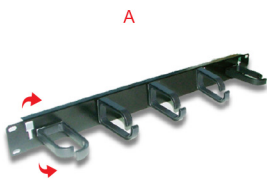
Specifications

- Material : 1.5mm Electro-Galvanized Steel
- Ventilation : Perforated surrounding to ventilate
- Color : Black color painted by Electrostatic powder coating process.

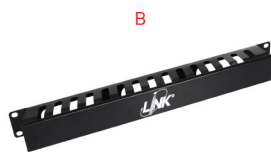
Ordering information

Description	Depth				
	25 cm	35 cm	55 cm	65 cm	75 cm
Front Shelf	CK-12250	CK-12350	-	-	-
Fix Shelf	-	CK-20350	CK-20550	CK-20650	CK-20750
Slide Shelf	-	CK-40350	CK-40550	CK-40650	CK-40750

Cable Management & Screw Set



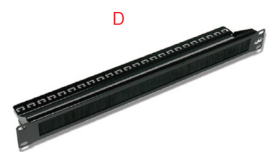
A



B



C



D

Specifications

- Material : Steel
- Thickness : 1.0 - 1.5 mm
- Color : Black color painted



E



F



I



G



H



J

Ordering information

Type	Description	Height	Order Number
A	Cable Management Panel with Pastic Holder (Plastic)	1U	US-3051
B	Cable Management Panel with Cover	1U	US-3053
C	Cable Management Panel with Cover	2U	US-3054
D	Brush Cable management with Bracket Steel	1U	US-3055
E	Vertical Cable Routing Hanger, Small	51.9x83x10 cm	US-3057
F	Vertical Cable Routing Hanger, Medium	83.5x83x10 cm	US-3058
G	Vertical Cable Routing Hanger, Large	83.5x144.7x10 cm	US-3059
H	Hanger for Patch Panel Angle (1U)	44x77x88.5 cm	US-3050
I	Blank Panels	1U - 8U	CK-6000X (X:1-8)
J	Black Fixing Set (Screw M6+Cage nut+Plastic washer)	-	CH-10010SET