

LINK 19" GLASS RACK

The premium innovation design, an elegant appearance, delivered with best enterprise service, support and reliability. LINK Glass Rack offered high strength product, high durability and efficiency at work, also can support to install 19" equipment.



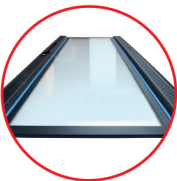
Front Door



Rear Door

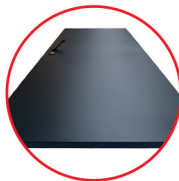


Side Panel



Tempered Glass Door (Front)

Tempered Glass
Perforated Steel



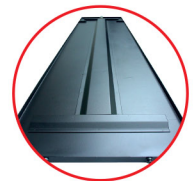
Steel Door (Rear)

Solid Steel without
Hole for Protection



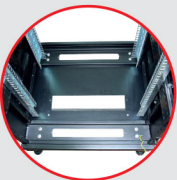
Side Panel

Easy to Remove by Slide Lock
and Security Lock



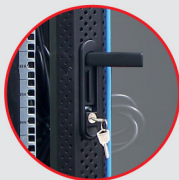
Side Panel Support

I-Frame to Strengthen



Base

with Slide Shutter
and the Space Cable Access



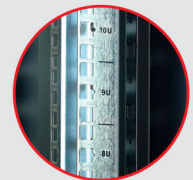
Security Locks

Press and Swing
Handle Lock



Top Cover

Provided the Space
for Cable Access with Cover



Mounting Pole

Rack Unit (U) Screen on Pole



LINK Logo

Front Door with LINK Logo



Castor & Stand

Up and down movable stand
with 360° caster



Grounding System

Connecting Between
all Removable Part of Rack
with Copper Ground Wire 2.5mm²

19" GLASS RACK



Glass Rack Features

- Modular knock down platform designed with grounding system for convenient assembly and adding accessories.
- Front door with "See-through" 5.0mm tempered glass and perforated surrounding for better ventilation.
- Rear door with I-frame to strengthen (excluding for 15U Rack).
- Provided swing handle lock at front and rear door.
- Side panels with I-frame to strengthen (excluding for 15U Rack) and easy removable by slide lock and security lock for installation and maintenance.
- Raised roof with vented can be mounted the fan sets and provided the space for cable access at the front and back of the roof with cover.
- Base with the slide shutter and the space for cable access and provided cover to close both of front and back when not using.
- 10x10mm Mounting pole made from Galvanized Steel with Zinc coated and can be adjustable with screened Rack unit (U) on the pole.
- Up and down movable stand with 360° caster made from Nylon 6 for convenience to move.
- The cable can be access from the top and the base.

Standards

- 19" Standard, ISO9001:2015 and ISO14001 : 2015
- ANSI/EIA-310D, IEC60297-1, IEC60297-2, BS5954 Part : 2, DIN 41494

Specifications

Material

- Frame : 2.0 mm Electro-galvanized steel sheet
- Front Door : 1.2 mm Electro-galvanized steel sheet
: 5.0 mm Tempered glass
- Rear Door : 1.2 mm Electro-galvanized steel sheet
- Side Panel : 1.2 mm Electro-galvanized steel sheet
- Mounting Pole : 2.0 mm Electro-galvanized steel sheet
with Zinc coated

Surface Finishing

- Electrostatic powder coating process, Black (RAL9004)

Maximum Load Capacity

- Static loading : 1000kg

Scope of Delivery

- Cabinets are packed in cartons.

Ordering information

U Height (U=4.45 cm.)	Width (cm.)	Depth (cm.)	Height (cm.)	Order Number
15U	60	60	88	CH-60615GS
	60	80	88	CH-60815GS
27U	60	60	140	CH-60627GS
	60	80	140	CH-60827GS
	60	90	140	CH-60927GS
36U	60	60	180	CH-60636GS
	60	60	207	CH-60642GS
42U	60	80	207	CH-60842GS
	60	90	207	CH-60942GS
	60	100	207	CH-61042GS
	60	110	207	CH-61142GS
	80	80	207	CH-80842GS
	80	100	207	CH-81042GS
	80	110	207	CH-81142GS