

## LINK 19" CURVE-WAVE RACK

The premium innovation design, an elegant appearance, delivered with best enterprise service, support and reliability. LINK Curve-Wave Rack offered high strength product, high durability and efficiency at work, also can support to install 19" equipment.



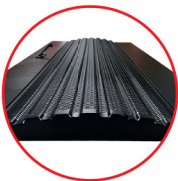
**Front Door**



**Rear Door**

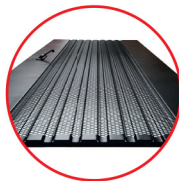


**Side Panel**



**Curve Wave Door (Front)**

Hexa Perforated for 120% Ventilation



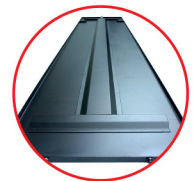
**Wave Door (Rear)**

Hexa Perforated for 110% Ventilation



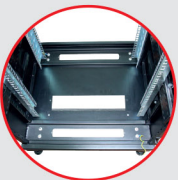
**Side Panel**

Easy to Remove by Slide Lock and Security Lock



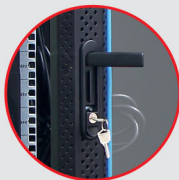
**Side Panel Support**

I-Frame to Strengthen



**Base**

with Slide Shutter and the Space Cable Access



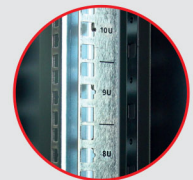
**Security Locks**

Press and Swing Handle Lock



**Top Cover**

Provided the Space for Cable Access with Cover



**Mounting Pole**

Rack Unit (U) Screen on Pole



**LINK Logo**

Front Door with LINK Logo



**Castor & Stand**

Up and down movable stand with 360° caster



**Grounding System**

Connecting Between all Removable Part of Rack with Copper Ground Wire 2.5mm<sup>2</sup>

# 19" CURVE-WAVE RACK



## Curve-Wave Rack Features

- Modular knock down platform designed with grounding system for convenient assembly and adding accessories.
- Front door designed in curve wave hexa perforated for 120% ventilation.
- Rear door made from Galvanized Steel with wave hexa perforated for 110% ventilation.
- Provided swing handle lock at front and rear door.
- Side panels with I-frame to strengthen (excluding for 15U Rack) and easy removable by slide lock and security lock for installation and maintenance.
- Raised roof with vented can be mounted the fan sets and provided the space for cable access at the front and back of the roof with cover.
- Base with the slide shutter and the space for cable access and provided cover to close both of front and back when not using.
- 10x10mm Mounting pole made from Galvanized Steel with Zinc coated and can be adjustable with screened Rack unit (U) on the pole.
- Up and down movable stand with 360° caster made from Nylon 6 for convenience to move.
- The cable can be access from the top and the base.

## Standards

- 19" Standard, ISO9001:2015 and ISO14001 : 2015
- ANSI/EIA-310D, IEC60297-1, IEC60297-2, BS5954 Part : 2, DIN 41494

## Specifications

### Material

- Frame : 2.0 mm Electro-galvanized steel sheet
- Front Door : 1.2 mm Electro-galvanized steel sheet
- Rear Door : 1.2 mm Electro-galvanized steel sheet
- Side Panel : 1.2 mm Electro-galvanized steel sheet
- Mounting Pole : 2.0 mm Electro-galvanized steel sheet with Zinc coated

### Surface Finishing

- Electrostatic powder coating process, Black (RAL9004)

### Maximum Load Capacity

- Static loading : 1000kg

### Scope of Delivery

- Cabinets are packed in cartons.

## Ordering information

U Height (U=4.45 cm.)	Width (cm.)	Depth (cm.)	Height (cm.)	Order Number
15U	60	60	88	CH-60615CW
	60	80	88	CH-60815CW
27U	60	60	140	CH-60627CW
	60	80	140	CH-60827CW
	60	90	140	CH-60927CW
42U	60	60	207	CH-60642CW
	60	80	207	CH-60842CW
	60	90	207	CH-60942CW
	60	100	207	CH-61042CW
	60	110	207	CH-61142CW
	80	80	207	CH-80842CW
	80	100	207	CH-81042CW
80	110	207	CH-81142CW	